



County of Sacramento

Department of Waste
Management and Recycling



Household Hazardous Waste Reuse Program

Ken Pereira - Supervising Waste
Management Specialist

Household Hazardous Waste



- Available to residents of Sacramento County & most of its incorporated cities.
- Customers are allowed to bring up to 15 gallons (or 125 lbs.) of HHW for safe and FREE disposal.

..... BUT not free for the County. ~ \$450,000 per year in just disposal costs



**FREE
REUSEABLE
HOUSEHOLD
PRODUCTS**





Products selected for reuse and distribution must meet the following basic criteria:

- The container must be at least half full*.
- The container must be fully sealed and not leaking.
- The container must be original and in good condition with little to no rust, dents or damage to its integrity.
- The product label must be an original manufacturer label, intact, fully legible and relatively clean.
- The product material in the container must be agreeable to the label.
- The product material does not appear to be contaminated.

Products that are not acceptable for reuse:

1. No banned or restricted or environmentally unfriendly pesticides, such as:

- DDT
- Malathion *
- Chlordane *
- Diazinon *
- Chlorine-based pesticides, such as Chlorpyrifos (Dursban)
- Carbaryl * (Sevin)
- Piperonyl butoxide (PBO)
- Strychnine products
- Arsenic products
- Penta, (2,4,5-T) products
- Rodenticides containing Warfarin, Brodifacoum, Difethialone, or Bromethalin

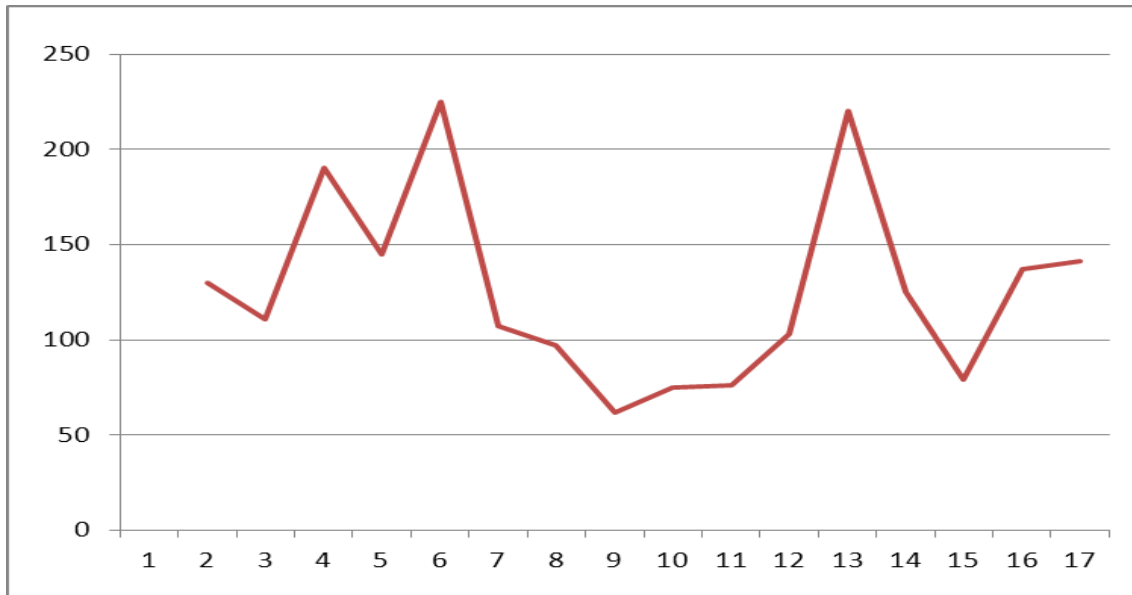
2. No lead-based paint.

3. No photographic chemicals.

4. No glass containers of any kind.

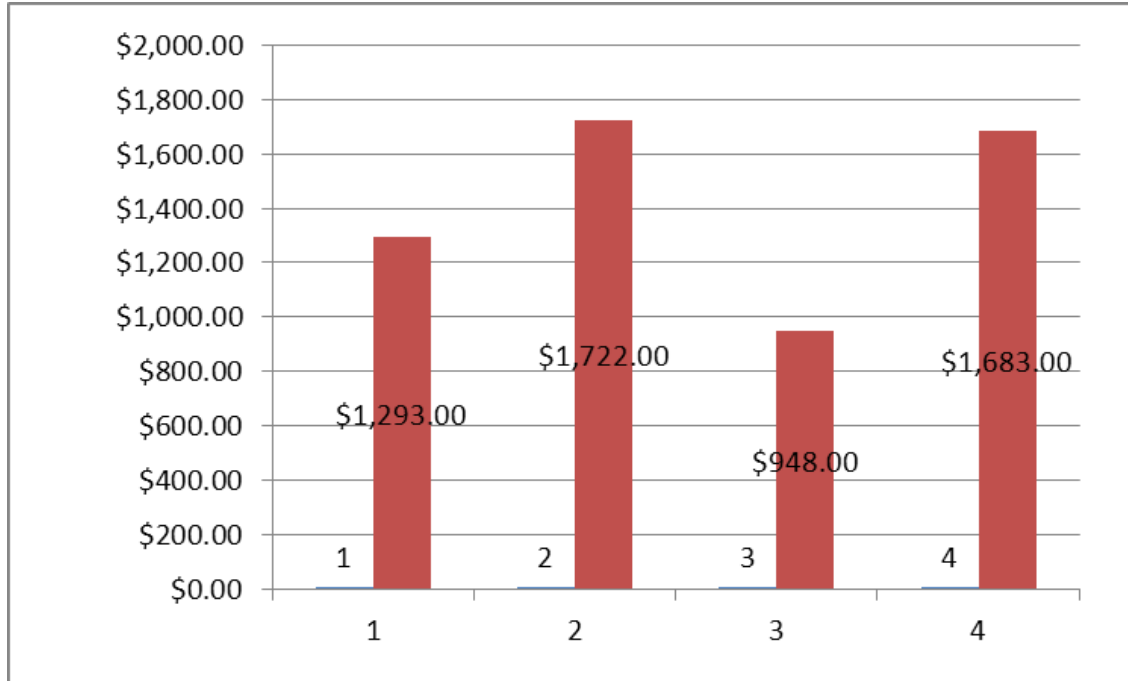
* These ones are more common.

How much Reuse do we give away?



- About 24,000 gallons per year.

Savings through avoided disposal costs.



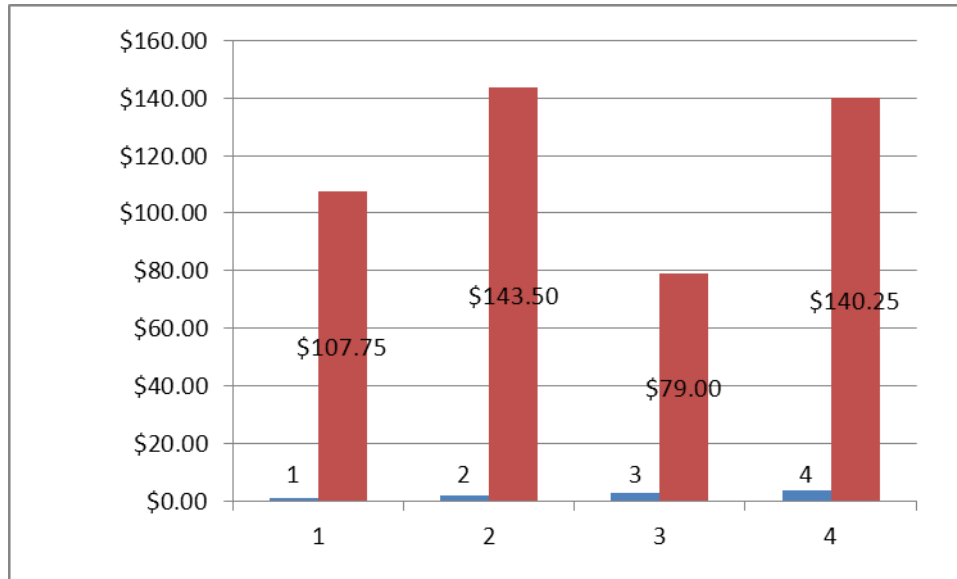
~ \$72,000 of
Disposal Costs
saved per year.

24,000 gallons * \$3.00/gal.

\$3.00 and estimate/model built on the cost of latex disposal. Assumes latex as largest % of reusable material.

New models needed to expand data.

Profit generated through PaintCare



~ \$6,000 in
projected
revenue.

The same 24,000 gallons * \$0.25/gal = \$6,000

Not spending money on disposal & receiving money as
incentive for reuse.

Some “Regulars” peruse the cart.



This picture taken just moments after opening the gate.

Some customers like to wander around and look for more stuff.

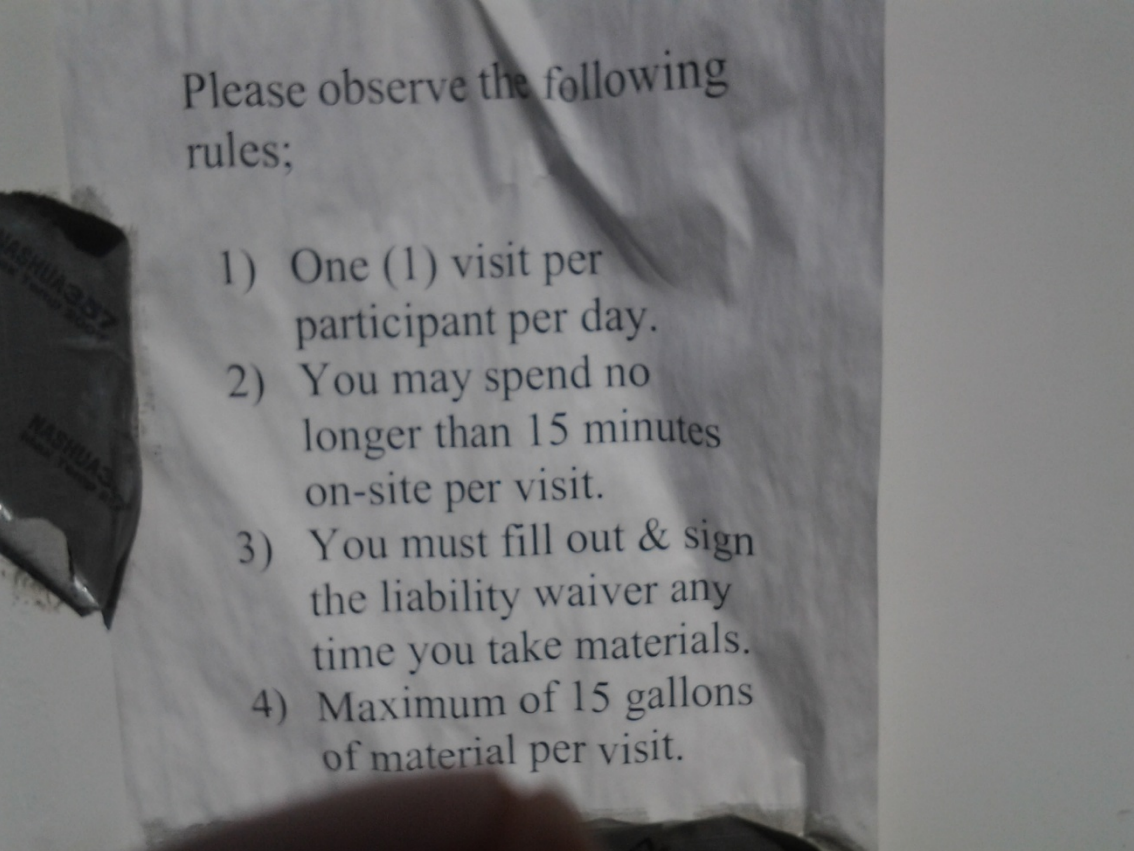


Signage and supervision are essential.

Even great programs have their darker side.

Some issues can arise, but with proper management, the negative effects can be mitigated.

Rules and Supervision are essential.



Please observe the following rules;

- 1) One (1) visit per participant per day.
- 2) You may spend no longer than 15 minutes on-site per visit.
- 3) You must fill out & sign the liability waiver any time you take materials.
- 4) Maximum of 15 gallons of material per visit.

Rules to help minimize “drama.”

- 1) One visit per day.
- 2) 15 minutes on site per visit
- 3) Fill out the waiver.
- 4) 15 gallons per visit.

Special Note to Customers;

New reuse items will be brought out at the top of each operational hour.

9am, 10am, etc.

Open Discussion

- Questions?
- Comments?
- Amusing Anecdotes.

The End.

Thank you!